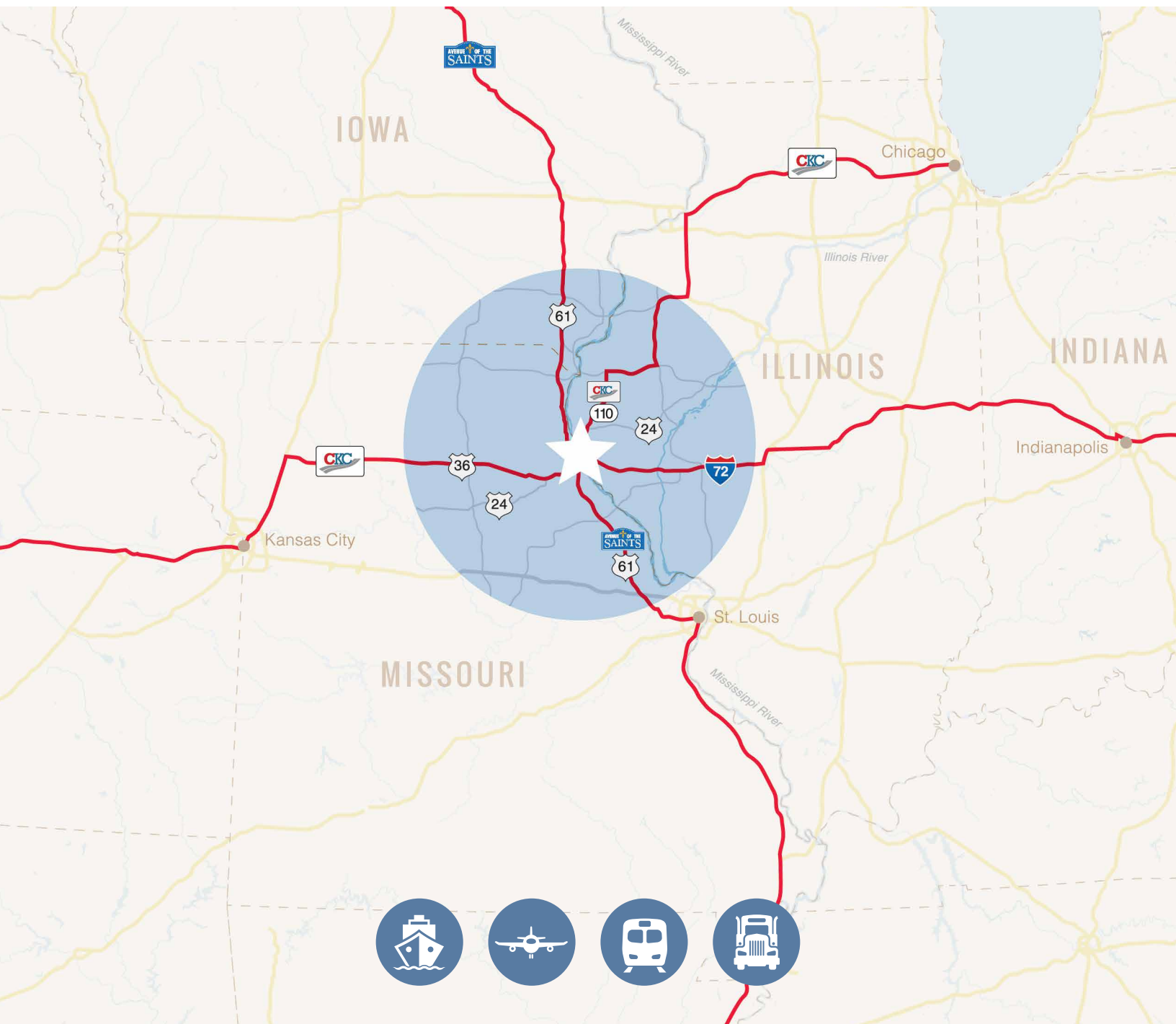


# MID-AMERICA INTERMODAL PORT

*Your alternative port of entry*



# MID-AMERICA PORT DEVELOPMENT OPPORTUNITIES



When it comes to your development project,  
we're the only **SHORT LIST** you need:

## LOCATION

Our physical location aligns with your global business strategy.

### Central United States

Our Midwest location offers you direct access to Marine Highway 35 on the Mississippi River.

**Market Proximity** 1/3 of the total U.S. population is within one day's drive and over 80% of the population is within two days' drive of the Port.

**Outside the Box** We're removed from the traditional (and congested) port areas which means we can meet your demand for increased efficiency by focusing on high speed delivery for the lowest cost possible.

**Future Growth** With over 500 acres of development-ready land adjacent to the Port, your project can be developed immediately with the capacity to grow.



## LOGISTICS

Let us be your Multimodal Transportation Hub that offers a quick channel to coastal and export markets.

**Barge** We are the farthest northern Port on the Mississippi River navigable 12 months out of the year.

**Rail** The Port is served by BNSF and Norfolk Southern with short line service provided by Burlington Junction.

**Truck** Your drivers can easily and quickly access the interstate and major highways. The Port is less than 10 miles from Interstate 172 / Chicago-Kansas City Expressway Route 110 and just 15 miles from U.S. 61 / Avenue of the Saints.

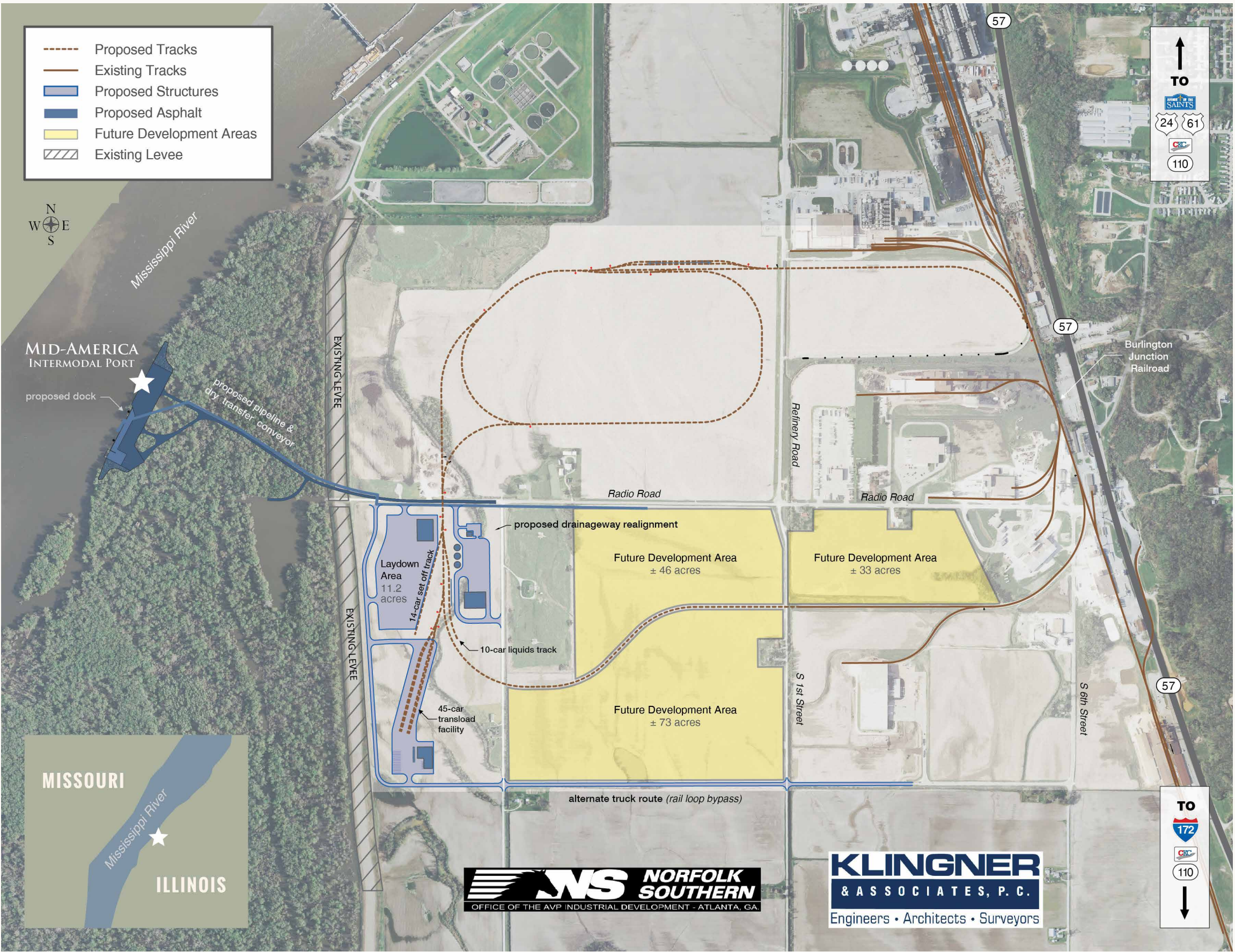
**Warehousing** You need it, we'll build it. There is strong support and developer interest for potential 3<sup>rd</sup> party warehousing facilities to serve Port users.

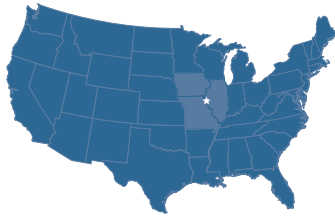
**Connections** Thanks to strong ties with the Midwest Inland Port in Decatur, Illinois, we can connect you to another multimodal hub that is accessed by three Class 1 railroads: Canadian National, CSX and Norfolk Southern.

**Foreign Trade Zone** Take advantage of duty-free commerce.

**ENTERPRISE ZONE:** State and local tax incentives and abatements to reduce your operating and construction costs.

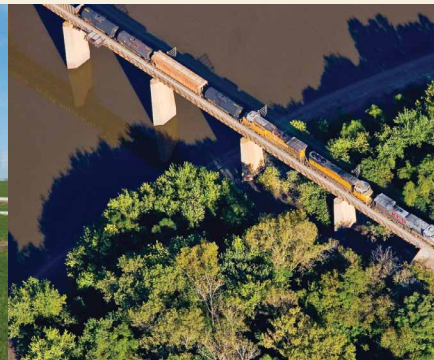
**CURRENT COMPANIES INCLUDE:** ADM, Phibro Animal Health, Prince Minerals, J.M. Huber, Trinity Industries, Inc., Gardner Denver, Inc. and more.





# MID-AMERICA INTERMODAL PORT

[MIDAMERICAPORT.COM](http://MIDAMERICAPORT.COM)



300 Civic Center Plaza | Suite 256 | Quincy, IL 62301  
217-223-4313 | [gredef@gredef.org](mailto:gredef@gredef.org)  
[GREDEF.ORG](http://GREDEF.ORG)